
Myopathy in patients with Hashimoto's Disease.

Jaqueline Villar¹, Héctor J. Finol¹, Sonia H. Torres² and Antonio Roschman-González¹.

¹Centro de Microscopía Electrónica, Facultad de Ciencias, Universidad Central de Venezuela. Caracas, Venezuela.

²Instituto de Medicina Experimental, Facultad de Medicina, Universidad Central de Venezuela. Caracas, Venezuela.

Keywords: Hashimoto thyroiditis, hypothyroidism, myopathy, autoimmune disease, ultrastructure, fiber types.

Abstract. Hashimoto thyroiditis (HT) is an autoimmune disease of the thyroid gland. Patients may present or not a hypothyroid state, and frequently have manifestations of myopathy. The present work was aimed to assess the clinical symptoms and signs of skeletal muscle alterations in HT, describe the muscular pathological changes and relate them to the functional thyroid status and to the autoimmune condition of the patient. Clinical and laboratory studies were performed in ten HT patients and three control subjects (hormonal levels and electromyography). Biopsies from their vastus lateralis of quadriceps femoris muscle were analyzed under light (histochemistry and immunofluorescence) and electron microscopy. All patients showed muscle focal alterations, ranging from moderate to severe atrophy, necrosis, activation of satellite cells, presence of autophagosomes, capillary alterations and macrophage and mast cell infiltration, common to autoimmune diseases. The intensity of clinical signs and symptoms was not related to the morphological muscle findings, the electromyography results, or to the state of the thyroid function. Reactions for immunoglobulin in muscle fibers were positive in 80% of the patients. Fiber type II proportion was increased in all patients, with the exception of those treated with L-thyroxine. In conclusion, autoimmune processes in several of the patients may be associated to the skeletal muscle alterations, independently of the functional state of the thyroid gland; however, fiber II type proportion could have been normalized by L-thyroxine treatment.

Miopatía en pacientes con enfermedad de Hashimoto.

Invest Clin 2015; 56(1): 33 - 46

Palabras clave: tiroiditis de Hashimoto, hipotiroidismo, miopatía, enfermedad autoinmune, ultraestructura, tipos de fibra.

Resumen. La tiroiditis de Hashimoto (TH) es una enfermedad autoinmune de la glándula tiroidea. Los pacientes pueden tener o no un estado hipotiroideo y suelen presentar manifestaciones de miopatía. Este trabajo estudia los síntomas y signos clínicos de alteración muscular esquelética que puedan estar presentes en pacientes con TH, describe los cambios patológicos musculares y los relaciona con el estado funcional de la glándula tiroidea y la condición autoinmune del paciente. Diez pacientes y tres sujetos controles fueron examinados clínicamente, se midieron los niveles de hormonas tiroideas, se practicó electromiografía y se tomó biopsia del vasto lateral del músculo cuádriceps crural para microscopía de luz (histoquímica e inmunofluorescencia) y microscopía electrónica. Todos los pacientes mostraron alteraciones musculares focales, atrofia moderada a severa, presencia de autofagosomas (glucogénosomas), necrosis, activación de las células satélites, infiltración de macrófagos y mastocitos, así como alteraciones en los capilares, similares a las de las enfermedades autoinmunes. La intensidad de los signos y síntomas no estuvo relacionada con los hallazgos morfológicos en músculo, los resultados de la electromiografía ni con el estado funcional tiroideo. La reacción a las inmunoglobulinas fue positiva en el músculo de 80% de los pacientes. La proporción de fibras musculares tipo II estuvo incrementada en los pacientes excepto en aquellos que recibieron tratamiento con L-tiroxina. En conclusión, el proceso autoinmune hacia el músculo parece asociarse a las alteraciones en éste, independientemente del estado funcional tiroideo, sin embargo, la proporción de las fibras tipo II puede haber sido normalizada por el tratamiento con L-tiroxina.

Recibido: 14-01-2014 Aceptado: 06-11-2014

INTRODUCTION

Hashimoto's Disease (Chronic Lymphocytic Thyroiditis) is one of two classical autoimmune conditions of the thyroid-directed autoimmunity. It may result in euthyroidism, subclinical hypothyroidism or overt hypothyroidism. The other autoimmune condition, Grave's Disease, results in hyperthyroidism (1). In both diseases the thyroid gland is infiltrated by T and B-cells reactive to thyroid antigens. The enlarge-

ment of the thyroid gland (goitre) in Hashimoto's thyroiditis (HT) is due to the lymphocytic infiltration, presence of oncocytes, previously named Hurthle cells, Askanazy cells or oxyphilic cells, and fibrosis, that increases in the final atrophic stage of the disease (2). In HT, several autoantibodies are produced against thyroid peroxidase (TPO), thyroglobulin, and thyroid stimulant hormone (TSH) receptors. However, antibody-dependent, cell-mediated cytotoxicity, is necessary for the de-

struction of thyroid cells, which is produced by cytotoxic T CD8+ cells and the collaboration of helper CD4+ T lymphocytes. The TSH receptor antibodies have been classified as stimulating (Graves' Disease), blocking (HT) and neutral (3). Disorders of the endocrine glands are associated to muscle dysfunction. Most of the endocrine myopathies affect proximal limb muscles in the upper and lower limbs. Autoimmune thyroid disease patients may present a myopathy related to hyper or hypothyroidism, but also euthyroid patients eventually show signs of muscle disease, as proximal weakness and easy fatigue. The symptoms and signs may be subtle and missed, if the patient is not carefully interrogated and examined. The endocrine dysfunction may affect skeletal muscle, due to the deficient or augmented metabolic effects of the respective hormones. On the other hand, autoimmune mechanisms may be involved in the endocrine disorder. This would explain the increased susceptibility within individuals and families to other endocrine and non-endocrine autoimmune conditions. HT is frequently associated to diabetes mellitus type I, vitiligo, pernicious anemia, Addison's disease, celiac disease, multiple sclerosis, rheumatoid arthritis, systemic lupus erythematosus, polymyositis, psoriasis and Sjögren's syndrome (4-9). There are several studies on myopathy in hypothyroid patients, some of them did not discriminate if they were due to autoimmune Hashimoto thyroiditis (10-12). Dunn *et al.* (13) described myopathy in four patients with subclinical hypothyroidism. Another study of 53 HT patients found only seven subjects with myopathy showing high antithyroid antibodies (14); Rodolico *et al.* (15) reported 10 HT patients, only with myopathic and not thyroid symptoms, and another study was aimed to describe the muscle capillary alterations in six HT and five hypothyroid patients (16).

The purpose of the present study was to examine 10 goitrous patients diagnosed as HT by thyroid biopsy, in order to relate the clinical study with laboratory results and the histological and ultrastructural findings in the quadriceps femoris muscle and to try to disclose if muscle alterations can be related to hormonal action and/or to autoimmunity.

PATIENTS AND METHODS

Patients

Ten patients of the Endocrine Unit of the Domingo Luciani Hospital, Caracas, Venezuela, and three volunteer control subjects were selected for the study after signing an informed consent. The patients were previously diagnosed as HT by the histological examination of the enlarged gland biopsies, or as euthyroid by clinical examination (no symptoms of hyper or hypothyroidism). The characteristics of the patients are shown in Table I. Nine of the 10 patients were female and their mean age was 37.6 (range 21-54 years). The control subjects were two females, ages 39 and 58, and one 48 year-old-male. They were selected from the surgical ward in the same Hospital, with processes not related to endocrine, muscular or other general diseases.

Patients were interrogated for dysesthesia, muscle cramps, myalgia, weakness, arthralgia or arthritis. Physical examination included exploration of tone, strength, superficial and profound sensibility, osteotendinous reflexes, joint examination, walking characteristics and muscular fatigue. A scale I to V was used to evaluate muscular force, V was defined as normal force, both in upper and lower limbs. Fatigue was evaluated with a protocol of three exercises repeated 10 times each (rising and lowering arms, stepping up and down a 25 cm stool and crouching with arms ex-

tended up). All evaluations were done by the same subject.

Laboratory

The hormones free 3-iodotironine (fT3), free thyroxin (fT4) and thyroid stimulating hormone (TSH) were measured in serum. The enzymes serum glutamate-pyruvate transaminase (SGPT) and serum glutamate-oxaloacetate transaminase (SGOT), lactic dehydrogenase (LDH) and creatine kinase (CK) were determined. Antithyroid antibodies: 1) Antinuclear antibodies (ANA) were analyzed by immune-fluorescence and 2) Antimicrosomal antibodies (AMA) by passive haemagglutination.

Electrophysiological studies

Electromyography was performed at rest, with voluntary contraction at minimum and maximum effort. The muscles studied were: deltoid, braquial biceps, triceps, quadriceps femoris, gastrocnemius and tibialis anterior. Electroneuronography was practiced to measure motor nervous conduction in the external sciatic popliteal nerve.

Muscle biopsy

Samples were taken from the vastus lateralis of the quadriceps femoris muscle of the 10 patients and control subjects, with the Bergström needle. Briefly, after local anesthesia with 2 mL of 2% lidocaine, a 5-mm skin incision was performed and muscle samples were obtained. The muscle sample was divided in two. One piece was frozen in isopentane cooled in liquid nitrogen for histochemical and immunofluorescence studies, and the other was used for electron microscopy.

Histochemical analysis

The sample was embedded with "optimal cutting temperature" OCT compound (Tissue Tek II) and frozen in isopentane

cooled with liquid nitrogen. Transverse 10 μ m serial sections were cut in a cryostat at -20°C and stained for adenosine triphosphatase ATPase, after alkaline (pH:10.3) and acid (pH: 4.37 and 4.6) pre-incubation (17); other sections were stained with hematoxylin-eosin (H-E). The comparison of serial sections stained with different pH preincubation of ATPase reaction, allowed the classification of fiber types: 250 fibers were classified by two different subjects and the percentage of fiber type was calculated.

Immunofluorescence of muscle

Direct determination of immunoglobulins in muscle was done with polyvalent antibodies. Frozen sections of 5 and 10 μ m. were air dried on a glass slide during 1 h, washed twice with phosphate buffer pH 7.2. They were covered with antihuman goat Polyvalent Anti-immunoglobulin marked with fluorescein (FITC), (G:A:D:E: and M; ATAB ATLANTIC ANTIBODIES trademark by ATLANTIC ANTIBODIES, INC. in SCARBOROUGH, 04074., UK) in a 1:40 dilution for 30 min in darkness. Washing was repeated and they were mounted in glycerine/ phosphate buffer 1:1.

Electromicroscopy

The samples were stretched between two pins, covered for 5 min with 3% glutaraldehyde in a 320 mOsmol phosphate buffer solution, pH 7.4. After that, the samples were diced into small blocks (2-mm length \times 1-mm diameter), fixed in glutaraldehyde for 40 min and postfixed in 1% OsO₄, dehydrated in ethanol and embedded in LX-122 resin (LADD Res. Inc., Burlington). Sections were cut with diamond knife in a Porter-Blum MT2-B ultramicrotome and stained with uranyl acetate and lead citrate. Sections were observed in a Hitachi H-500 transmission electron microscope at an accelerating voltage of 100 kV.

Statistics

Spearman Rank Order Correlations were calculated for the numerical results. The statistics program used was Statistica (Statsoft Inc. Tulsa Oklahoma, USA). Statistical significance was established at a P value of less than 0.05.

RESULTS

Patient characteristics are shown in Table I. Patient N° 3 was the only male. The duration of the disease was between 4 and 16 years. In all patients rheumatic disease was discarded according to the American Rheumatic Association criteria (18).

The patients, that initially were assumed to have normal thyroid function (no clinical symptoms of hyper or hypothyroidism), were reclassified after the determination of the hormonal levels of TSH and fT4 (Table II), according to the definition of "subclinical thyroid disease" (19). The reference normal levels for TSH, fT4 and fT3 were respectively 0.45-4.5 mIU/L, 0.73-1.95 ng/dL and 2.14-5.34 pg/mL, therefore, the functional state of the thyroid gland was: Euthyroidism in patients 1-5, Subclinical Hypothyroidism (serum concentration of TSH above the statistically defined upper limit of the reference range, with serum fT4 concentration within its reference range) in patients 6-9; and hypothyroidism (increased TSH and decreased fT4) in patient 10.

The levels of fT3 were normal in all patients (Table II). The levels of fT4 correlated inversely with the levels of TSH ($r = -0.92$, $p < 0.005$) and also, the levels of fT3 with TSH ($r = -0.63$, $p < 0.05$). LDH was normal in all patients; TGO was only slightly elevated in patient 8 (35 U/L, normal 10-30 U/L), as well as TGP (42 U/L, normal 6-37 U/L). CK levels were elevated in patients 3 and 10 (Table II).

Important history data were found in some subjects: Patient 2 had a euthyroid nodule surgically removed, and a slight hyperplasia of the remaining tissue. Patient 10 had a toxic diffuse goitre partially removed two years before the present study. Only patients 3 and 5 were presently treated with L-thyroxine. Patient 3 had a previous diagnosis of hypothyroidism (Table I).

The interrogation for muscular symptoms was positive for cramps in nine patients and for weakness in seven; six reported muscle pain mainly associated to cold, and five suffered occasionally joint pain. At examination, walking, muscular tone and proximal force were normal in all subjects. Distal force in upper and lower extremities was slightly decreased in five and moderately decreased in two patients. Fatigue was slight in two patients and evident in five; reflexes were exaggerated in five patients and decreased in two (Table I).

Antinuclear antibodies (ANA) were negative in all patients. The presence of antimicrosomal antibodies (AMA) was found in two of five euthyroid patients (patients 3 and 5). It was also found high AMA titers in three of four patients with subclinical hypothyroidism (patients 7-9) and in patient 10, who was diagnosed with overt hypothyroidism (Table II): In synthesis, six out of ten HT patients showed presence of AMA.

Nerve velocity conduction was normal in all patients. Electromyography at rest was also normal in all patients. In half of the subjects (1, 3, 5, 6, and 8, (Table II) minimal and maximal voluntary contractions showed low amplitude and short duration polyphasic motor unit potentials; this was more frequently found in deltoid and quadriceps femoris muscles.

Results of muscle optical and electron microscopy examination are shown in

TABLE I
PATIENTS CHARACTERISTICS AND CLINICAL SYMPTOMS AND SIGNS

Pac. N ^o	Age (ys)	Sex	Disease duration (ys)	Cramps	Dysesthesia	Myalgia	Weakness	Joint pain	Distal force	Fatigue	Reflexes	Joint signs	Other relevant data
1	58	F	15	+	paresthesia	+/-	+	+/-	IV/V	++	↓	-	-
2	38	F	10	+	paresthesia	-	+	+/-	IV/V	+	↑	-	Operated 2 years before, euthyroid nodular goitre
3	37	M	4	+	-	-	+	+	IV/V	++	↓	-	Clinical diagnosis of hypothyroidism treated with levothyroxine
4	53	F	5	+	hypersthesia	+	+	+	IV/V	++	↑	Heberden nodules	-
5	39	F	4	+	paresthesia	+	+	+	IV/V	++	↑	Heberden nodules	In treatment with levothyroxine
6	42	F	14	+	-	+	+	-	III/V	++	↑	-	-
7	21	F	13	+	-	+	+	-	III/V	++	N	-	-
8	37	F	16	-	-	+/-	-	-	V/V	+	↑	-	-
9	27	F	6	+	-	-	-	-	V/V	-	N	-	-
10	24	F	4	-	-	-	-	-	V/V	-	N	-	Operated 2 years before, toxic diffuse goitre

Cramps: + = present. Myalgia and Joint pain: +/- = occasional, + = present. Fatigue (exercise test): + = slight, ++ = evident. Force: V/V normalina 5 degree scale.

TABLE II
ELECTROMYOGRAM; FT3, FT4 AND THYROTROPIN (TSH) LEVELS; CREATINE KINASE ENZYME (CK) LEVELS, AND ANTITHYROID ANTIBODIES (ANTIMICROSOMAL ANTIBODIES, AMA)

Patient N°	Electro myogram	I* uptake (%)	Free T3 (pg/mL)	Free T4 (ng/dL)	TSH (mIU/L)	CK (U/L)	AMA (titre)
1	Myopathy	37	3.18	1.32	1.46	57	0
2	Normal	28	3.79	1.60	1.20	37	0
3	Myopathy	3	5.19	1.29	1.36	147	1:1600
4	Normal	NA	5.28	1.70	1.04	22	0
5	Myopathy	14	4.01	1.28	1.33	30	1:1600
6	Myopathy	24	3.47	0.80	10.51	86	0
7	Normal	NA	3.76	1.21	7.74	21	1:100
8	Myopathy	NA	4.39	0.89	16.31	49	1:102400
9	Normal	38	3.55	0.83	22.59	33	1:1600
10	Normal	NA	2.83	0.69	>54	123	1:1600

NA= not available.

Table III. Control patients did not show any abnormalities in muscle sample examination, and their type II fiber proportions were 49%, 46% and 55%. The histochemical examination was performed in seven patients; H-E stained sections showed infiltration of mononuclear cells (Figs. 1A and B) and in patient 5 hyaline degeneration and hemorrhage was found (Fig. 1A). ATP-ase sections allowed for classification of fiber types. In five patients an increased proportion of type II fibers (67%-79%) was found (Fig. 1D). Patients 3 and 5 showed 56% and 46% of type II fibers, which was similar to the normal controls (Fig.1C); these two patients were receiving treatment with L-thyroxine.

Eight of the ten patients showed different intensities of fluorescence in skeletal muscle with the polyvalent anti-immunoglobulin; the fluorescence had a linear or granular aspect in the sarcolemma (Fig. 1E), and in patient 5 it was also present as granules inside the muscle fibers (Fig. 1F).

The transmission electron microscopy showed different alterations in skeletal muscle; in muscle fibers abundant mitochondria, lipid droplets, autophagosomes of glycogenosome type, multivesicular bodies and lipofuscin granules were present (Fig. 2). Most organelles were seen in subsarcolemmal and intermyofibrillar spaces. Numerous muscle fibers exhibited evident atrophy (Fig. 3) and segmental necrosis also was found (Fig. 4). Capillaries presented wide (Fig. 3) and occluded lumens (Fig. 5) with endothelial cell cytoplasm prolongations (Figs. 3 and 5). The basement membrane was usually thickened (Figs. 3, 5, and 7) and the mononuclear cell infiltrate was represented by macrophages and mast cells surrounded by numerous collagen fibrils (Figs. 6 and 7). Activated satellite cells were observed separating from muscle fibers (Fig. 3).

DISCUSSION

The main results in the preset work are: 1) there were muscle alterations in all

TABLE III
HISTOCHEMICAL AND ULTRASTRUCTURAL CHARACTERISTICS OF VASTUS LATERALIS MUSCLE

Patient N°	Type II fiber (%)	Optic microscopy	Electron microscopy
1	NA	NA	Hypercontraction. Fragmentation of the sarcotubular system. Necrosis.
2	NA	NA	Normal sarcomeric organization. In subsarcolemmic region abundant mitochondria, lipofuscin, lipid droplets, glycogenosomes, multivesicular bodies, multifilamentous body, fibrosis, satellite cells with swollen mitochondria, polysomes and abundant RER. Macrophages. Mast cells with degranulation.
3	56	Atrophy of fiber type I and II.	Necrosis. Separation of satellite cells. Capillaries with partial lumen occlusion.
4	79	Moderate infiltration by mononuclear cells.	Hypercontraction. Severe atrophy. Separation of satellite cells. Capillaries with thickening of basement membrane and prolongations into the lumen
5	46	Zones of hyaline degeneration. Zones of hemorrhage. Atrophy of type II fibers.	Capillaries with marked thickening of basement membrane
6	NA	NA	Atrophy
7	79	Zones with rounded cells. Infiltration by mononuclear cells.	Normal fibers. Fibers with mild to severe atrophy. Abundant lipofuscin and lipid drops.
8	67	Atrophy of type II fibers Moderate infiltration by mononuclear cells.	Hypercontraction. Sarcomeric disorganization. Fibers with mild to severe atrophy. Autophagosomes. Glycogenosomes. Multivesicular bodies. Abundant lipofuscin and lipid drops. Increased collagen (fibrosis). Separation of satellite cells. Capillaries with prolongations into the lumen and thickening of the basement membrane. Macrophages. Mast cells with degranulation.
9	76	Atrophy of type I and type II fibers	NA
10	70	Atrophy of type II fibers. Rounded cells. Moderate infiltration by mononuclear cells.	Moderate atrophy.

NA: not available.

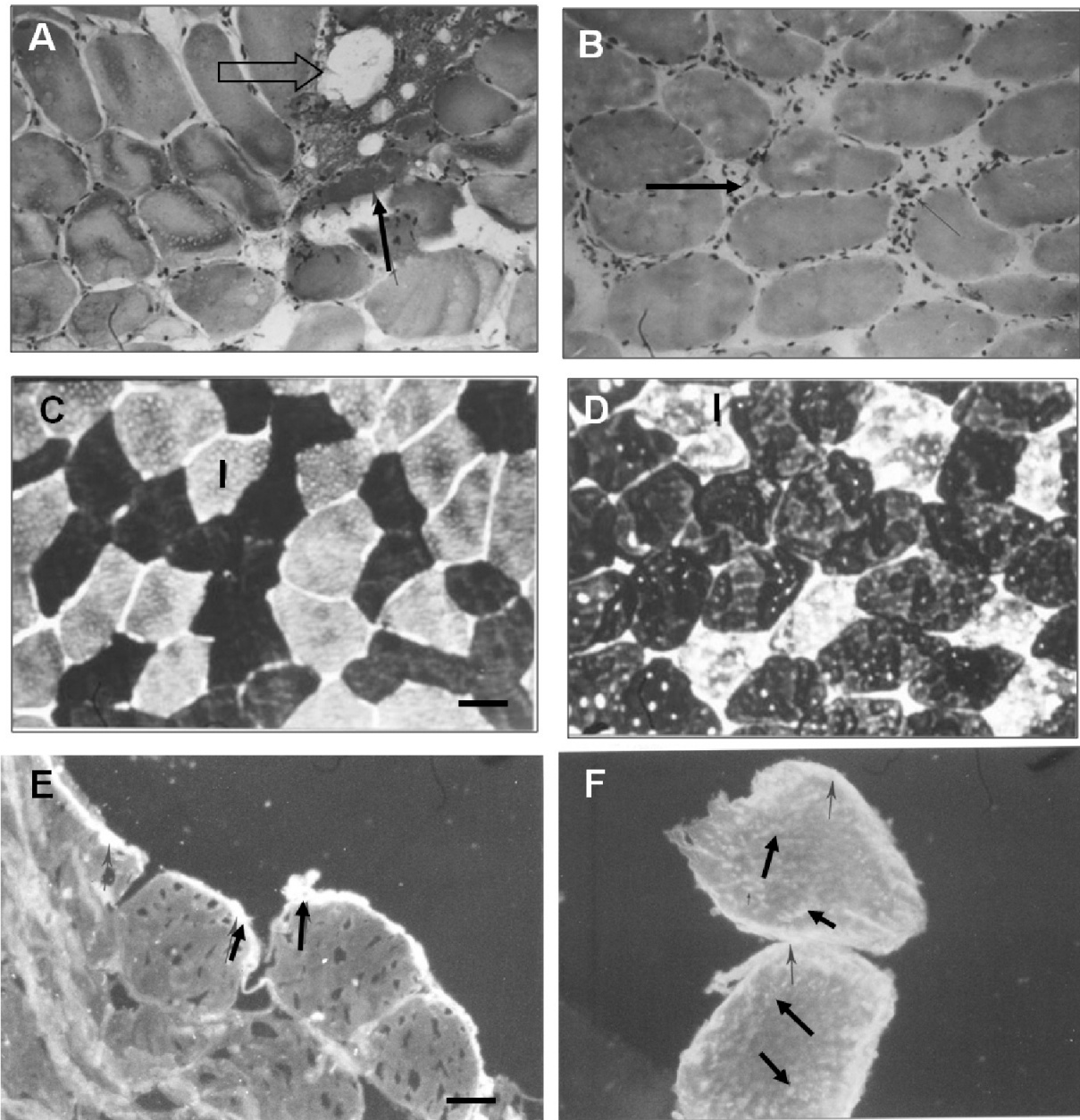


Fig. 1. Transversal sections of vastus lateralis of quadriceps femoris. 1A. Patient N° 5. H-E. Hyaline degeneration (open arrow). Haemorrhage (arrow), slight infiltration of mononuclear cells. 1B. Patient N° 4. H-E. Moderate infiltration of mononuclear cells. 1C. Control subject. ATPase preincubation pH 10.3. Clear fibers are type II, dark fibres are type I. Horizontal bar 100 μ m (applies to 1 A,B,C and D). 1D. Patient N° 4. ATPase preincubation pH 10,3. Note increased proportion of dark fibers (type II). 1E: Patient N° 2. Immunofluorescence (antiglobulines). Linear fluorescence in the sarcolemma (arrows). Horizontal bar 50 μ m (applies to 1 E and F). 1F: Patient N° 5. Linear fluorescence in the sarcolemma (thin arrows). Granular fluorescente inside the muscle fiber (thick arrows).

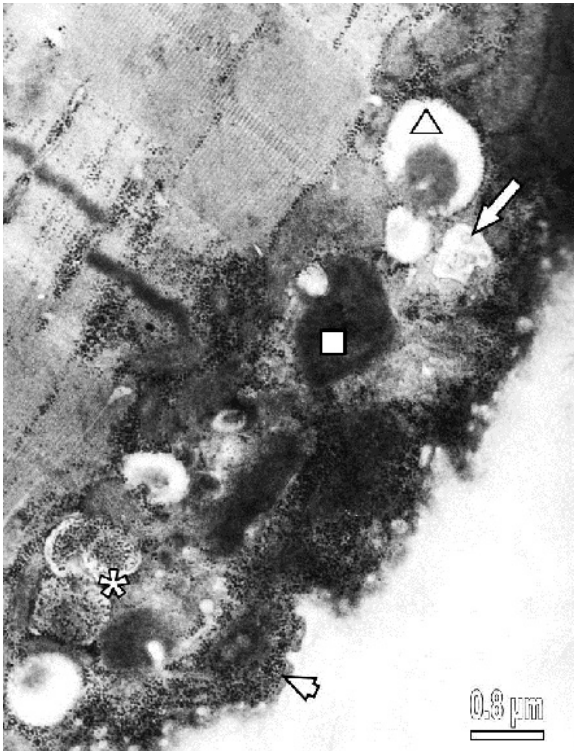


Fig. 2. Lipid droplets (triangle), mitochondria (Mit), several glycogenosomes (asterisk), multivesicular body (arrow), lipofuscin granules (square) and abundant glycogen particles (arrowhead) are seen in the subsarcolemmal space.

the studied patients, including moderate to severe atrophy, necrosis, activation of satellite cells, presence of autophagosomes and macrophage and mast cell infiltration. 2) Muscle capillary alterations, common to autoimmune diseases, were found in several patients. 3) All patients, with the exception of the two which were receiving treatment with L-thyroxine, showed an increased proportion of type II muscle fibers. 4) Most patients (8/10) were positive for immunoglobulins in muscle fibers. 5) The clinical symptoms and/or signs of myopathy were present in all patients, except in patient 10. Their intensity was not related to the morphological findings in muscle, the results of electromyography or the state of thyroid

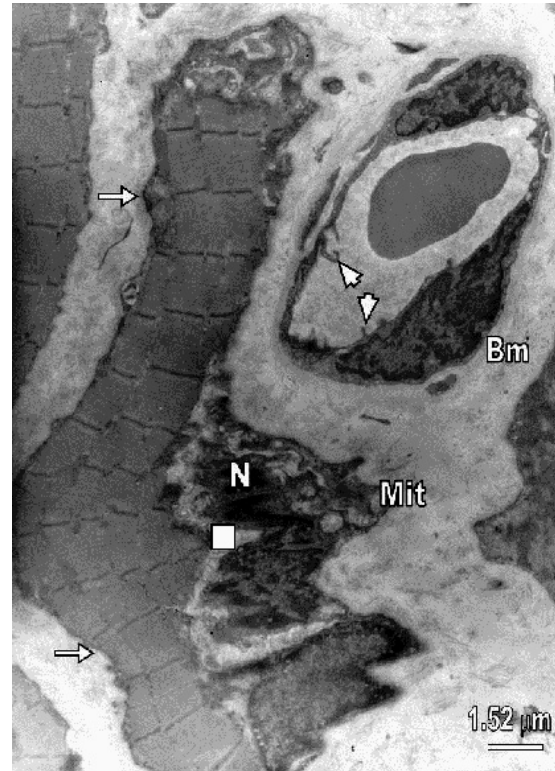


Fig. 3. A wide space (square) is located between an atrophied skeletal muscle fiber (arrows) and a satellite cell showing an irregular shaped nucleus (N) and swollen mitochondria (Mit). The capillary presents endothelial cell cytoplasm prolongations into the lumen (arrowheads) and is covered by a thickened basement membrane (Bm).

function (euthyroid, subclinical or overt hypothyroidism).

The patients were selected by the presence of goitre, without clinical symptoms and signs of hypothyroidism. The diagnosis of Hashimoto disease was confirmed by thyroid gland biopsy. However, when serum TSH and fT4 levels were measured, four patients showed subclinical hypothyroidism and one, overt hypothyroidism. This last patient suffered, originally, from a non-treatable hyperthyroidism; the thyroid gland was removed two years before the present study, leaving some remnants of thyroid tissue. She did not show clinical symptoms or signs

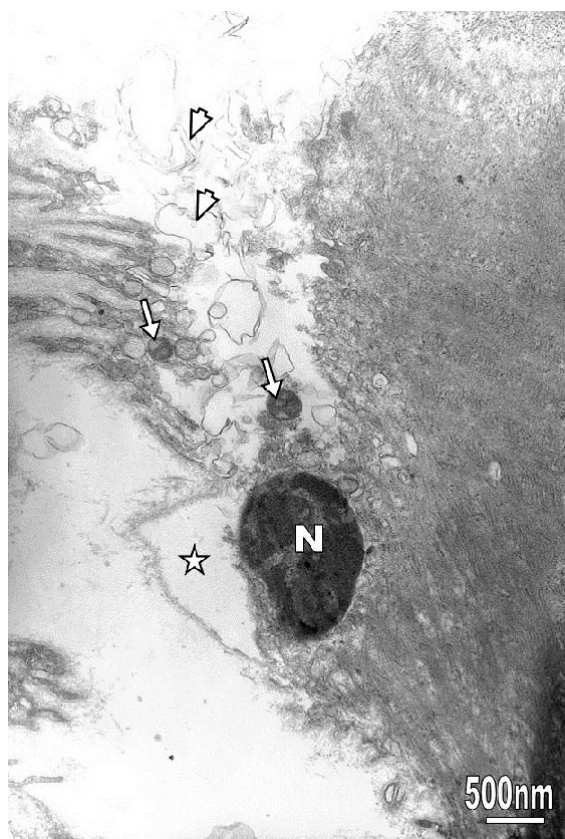


Fig. 4. This section shows segmental necrosis with rests of plasmalemma (arrowheads) and organelles (arrows). Notice a space (star) formed by the separation of basement membrane in front of a hyperchromatic nucleus (N).

of either hypothyroidism or myopathy; however, her TSH was increased and the fT4 was below the reference level. The muscle biopsy showed moderate atrophy and scarce mononuclear infiltration. It is possible that the remaining thyroid gland tissue was not sufficient to maintain a normal function.

The muscular alterations found in the patients were similar to those described by other authors in hypothyroid subjects. Lin *et al.* (20) refer to fiber atrophy, mitochondrial abnormalities and abnormal glycogen accumulation; McKeran *et al.* (10) also mention glycogen inclusions, glycogenosomes, excess lipid and vesicular abnormalities. But fiber atrophy, necrosis and

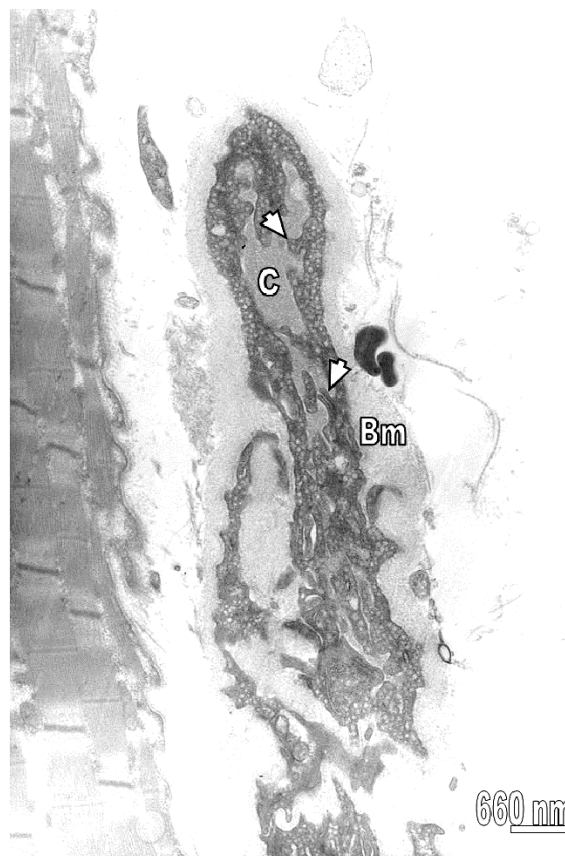


Fig. 5. The capillary (C) shows an almost occluded lumen with endothelial cell cytoplasm prolongations (arrowheads). The capillary is surrounded by a thickened basement membrane (Bm).

mononuclear infiltration are also seen in some autoimmune diseases (21-24). In relation to the fiber type proportion, Ono *et al.* (12) describe the higher percentage of type II fibers, as it was found in the present work; however, McKeran *et al.* (10) report just the opposite. The normal proportion of type II fiber in the two patients that were receiving L-thyroxine suggests that increased proportion of II type fibers may be produced by the fall of fT4 and can be corrected by the hormonal treatment. However, it would be important to corroborate this assumption with a higher number of patients. An increased proportion of type II fibers is also a feature of hyperthyroidism.

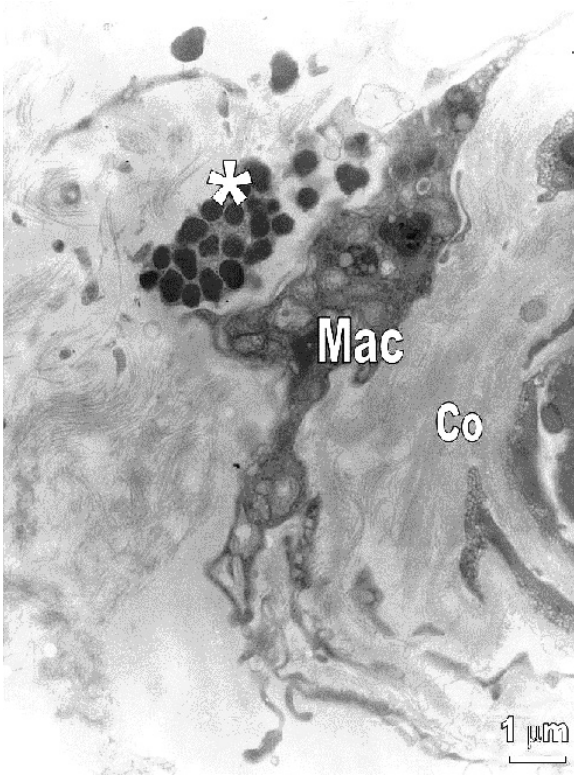


Fig. 6. A presuntive macrophage (Mac) and a mast cell (asterisk) are surrounded by numerous collagen fibrils (Co).

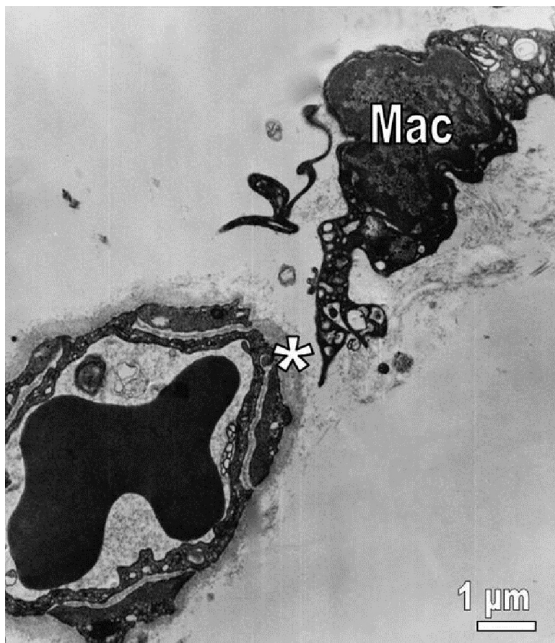


Fig. 7. A macrophage (Mac) and a capillary showing thickened basement membrane (asterisk).

In our laboratory, the study of 8 patients (7 female) with hyperthyroidism, showed a type II fiber proportion of $62 \pm 4\%$ (25). In a control group of 17 women, from a different study performed in our laboratory, the fiber II proportion was $46 \pm 7\%$ (26). The increase of type II fiber proportion, both in hyperthyroidism and hypothyroidism, may be interpreted as a modulatory effect of the level of thyroid hormones.

Satellite cells are pivotal in muscle regeneration and may be considered as dormant myoblasts (27). In the present work they showed to be activated, because they were partially separated from the muscle cells, although conserving the basement membrane. However, they were not seen being transformed into myoblasts or undergoing an apoptotic process (28). It seems likely that, as shown two months after denervation, satellite cells return into the initial position in relation to the muscle cell (29).

The abnormalities in muscle were focalized, with normal zones of muscle; this may explain why not all of the patients showed a pattern of myopathy in the electromyography. High levels of CK are a sign of necrosis. Although necrosis was seen in the muscle of some patients, it may have not been sufficiently widespread to increase CK levels.

HT is considered an autoimmune disease, and five patients showed thyroid hormonal levels considered to be normal. It is not easy to separate the cause of muscle abnormalities in these patients. It is possible that complete muscle recovery takes a long time after normalization of the hormonal levels. Other possibility is that subjects with genetic susceptibility to autoimmune disease may develop complex diseases due to numerous genes which interact with each other and with environmental factors (30). The presence of myopathy in patients with an euthyroid state, points to the contribu-

tion of an autoimmune component to muscle aggression; this assumption is stressed by the muscle capillary alterations, similar to those found in autoimmune conditions (16). In a study of 53 cases with chronic lymphocytic thyroiditis, Bai (14) found neurological alterations in 29 patients, seven with myopathy; neuropathy occurred more often in cases with both chronic lymphocyte thyroiditis and some autoimmune disorders, suggesting that abnormal immune function might be the common background in those patients. In agreement with this suggestion is the frequent association of hypothyroidism with autoimmune disease (4-9).

In conclusion, the 10 patients with HT showed morphological muscle alterations, and some symptoms and signs of myopathy. It is possible that the increase of type II muscle fiber proportion found in the HT patients was corrected with L-thyroxin treatment used in two of these patients. The autoimmune process in several of these patients, favored by a genetic background, may be associated to the skeletal muscle alterations, independently of the functional state of the thyroid gland.

ACKNOWLEDGMENTS

Our thanks to Dr. Saverio Russo (Hospital Domingo Luciani, Caracas, Venezuela) for the clinical study of the patients and Dr. Marian Ulrich, (Institute of Biomedicine, Faculty of Medicine, Central University of Venezuela) for processing the samples of immunofluorescence in muscle.

REFERENCES

1. **Fabris M, Grimaldi F, Villalta D, Picierno A, Fabro C, Bolzan M, De Vita S, Tonutti E.** BlyS and April serum levels in patients with autoimmune thyroid diseases. *Autoimmun Rev* 2010; 9:165-169.
2. **Kimura HJ, Chen CY, Tzou S-C, Rocchi R, Landek-Salgado MA, Suzuki K, Kimura M, Rose NR, Caturegli P.** Immuno-proteasome overexpression underlies the pathogenesis of thyroid oncocytes and primary hypothyroidism: Studies in human and mice. *PLoS One* 2009; 4(11):e7857. doi:10.1371/journal.pone.0007857.
3. **Michalek K, Morshed SA, Latif R, Davies TF.** TSH receptor autoantibodies. *Autoimmun Rev* 2009; 9:113-116.
4. **Van den Driessche A, Eenkoorn V, Van Gaal L, De Block C.** Type 1 diabetes and autoimmune polyglandular syndrome: a critical review. *Neth J Med* 2009; 67:376-387.
5. **Kumar KV, Priya S, Sharma R, Kapoor U, Saini M, Bisht YS.** Autoimmune thyroid disease in patients with vitiligo: prevalence study in India. *Endocr Pract* 2012; 18:194-199.
6. **Wang H, Li H, Kai C, Deng J.** Polymyositis associated with hypothyroidism or hyperthyroidism: two cases and review of the literature. *Clin Rheumatol* 2011; 30:449-458.
7. **Antonelli A, Fallahi P, Ferrari SM, Mancusi C, Giuggioli D, Colaci M, Ferri C.** Incidence of thyroid disorders in systemic sclerosis: results from a longitudinal follow-up. *J Clin Endocrinol Metab* 2013; 98:E1198-1202.
8. **Barragán-Garfias JA, Zárate A.** Relation between autoimmune thyroid diseases and connective tissue diseases. *Rev Med Inst Mex Seguro Soc* 2013; 51:e1-5.
9. **Jara LJ, Navarro C, Brito-Zerón Mdel P, García-Carrasco M, Escárcega RO, Ramos-Casals M.** *Clin Rheumatol* 2007; 26:1601-1606.
10. **McKeran RO, Slavin G, Andrews TM, Ward P, Mair WG.** Hypothyroid myopathy. A clinical and pathological study. *J Pathol* 1980; 132:35-54.
11. **Khaleeli AA, Gohil K, McPhail G, Round JM, Edwards RH.** Muscle morphology and metabolism in hypothyroid myopathy: effects of treatment. *J Clin Pathol* 1983; 36:519-526.
12. **Ono S, Inouye K, Mannen T.** Myopathology of hypothyroid myopathy. Some new

- observations. *J Neurol Sci* 1987; 77:237-248.
13. **Dunn ME, Hennessey JV, Cosmas AC, Lamont LS, Manfredi TG.** Clinical case report: ultrastructural evidence of skeletal muscle dysfunction in patients with subclinical hypothyroidism. *Thyroid Science* 2009; 4:CLS1-8.
 14. **Bai Y.** Neuropathy and myopathy in patients with chronic lymphocytic thyroiditis. *Zhongguo Yi Xue Ke Xue Yuan Xue Bao* 1990; 12:296-299.
 15. **Rodolico C, Toscano A, Benvença S, Mazzeo A, Bartolone S, Bartolone L, Girlanda P, Monici MC, Migliorato A, Trimarchi F, Vita F.** Myopathy as the persistently isolated symptomatology of primary autoimmune hypothyroidism. *Tyroid* 1998; 8:1033-1038.
 16. **Márquez A, Finol HJ, De Blanco MC, Adjounian H, Pulido-Méndez M.** Skeletal muscle microvascular alterations in euthyroid and hypothyroid patients with autoimmune thyroid disease. *J Submicrosc Cytol Pathol* 2001; 33:425-432.
 17. **Brooke MH, Kaiser KK.** Muscle fiber types: how many and what kind? *Arch Neurol* 1970; 123:369-379.
 18. **Arnett FC, Edworthy SM, Bloch DA, McShane DJ, Fries JF, Cooper NS, Healey LA, Kaplan SR, Liang MH, Luthra HS, Medsger Jr TA, Mitchell DM, Neustadt DH, Pinals RS, Schaller JG, Sharp JT, Wilder RL, Hunder GG.** The American Rheumatism Association 1987 revised criteria for the classification of rheumatoid arthritis. *Arthritis Rheum* 1988; 31:315-324.
 19. **Surks MI, Ortiz, E, Daniels, GH, Sawin CT, Col NF, Cobin RH, Franklyn JA, Hershman JM, Burman KD, Denke MA, Gorman C, Cooper RS, Weissman NJ.** Subclinical thyroid disease. Scientific Review and guidelines for diagnosis and management. *JAMA* 2004; 291(2); 228-238.
 20. **Lin RT, Liu CK, Tai CT, Lai CL.** Hypothyroid myopathy-pathological and ultrastructural study. *Kaohsiung J Med Sci* 2000; 16(2):68-75.
 21. **Walton J.** Disorders of Voluntary Muscle. 5th edition. The Bath Press, Avon. Churchill and Livingstone, 1988, p351.
 22. **Finol HJ, Montagnani S, Márquez A, Montes de Oca I, Müller B.** Ultrastructural pathology of skeletal muscle in systemic lupus erythematosus. *J Rheumatol* 1990; 17:210-219.
 23. **Finol HJ, Márquez A, Montes de Oca I, Müller B, Rivera H.** Muscle ultrastructure in some autoimmune nervous diseases. *Acta Microsc* 1992 1:55-62.
 24. **Finol HJ, Márquez A, Rivera H, Montes de Oca I, Muller B.** Ultrastructure of systemic sclerosis inflammatory myopathy. *J Submicrosc Cytol Pathol* 1994; 26:245-253.
 25. **Torres S.H., Domínguez JJ, Perdomo P, Müller B, Finol HJ, Montes de Oca I.** Histochemical and ultrastructural study in skeletal muscle from hyperthyroid patients. 6th International Symposium Biochemistry of Exercise. *Clinical Physiol* 1985; 5 (Suppl 4):123.
 26. **Torres SH, Montes de Oca M, Loeb E, Mata A, Hernandez N.** Gender and skeletal muscle characteristics in subjects with chronic obstructive pulmonary disease. *Respir Med* 2011; 105:88-94.
 27. **Relaix F, Zammit PS.** Satellite cells are essential for skeletal muscle regeneration: the cell on the edge returns centre stage. *Development* 2012; 139:2845-2855.
 28. **Jerurikar S, Kuzon WM.** Satellite cell depletion in degenerative skeletal muscle. *Apoptosis* 2003; 8 (6):573-578.
 29. **Finol H.** Efectos de la denervación sobre la ultraestructura de un músculo rápido de rata. *Acta Cient. Venez* 1980; 31:229-239.
 30. **Tomer Y, Huber A.** The etiology of autoimmune thyroid disease: A story of genes and environment. *J Autoimmun* 2009; 32:219-231.